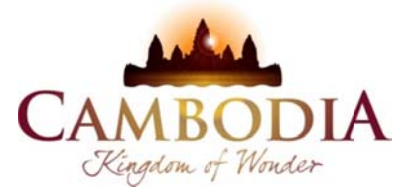




KINGDOM OF CAMBODIA
NATION RELIGION KING



TOURISM STATISTICS REPORT

2010

MINISTRY OF TOURISM

Statistics and Tourism Information Department

No. A3, Street 169, Sangkat Veal Vong, Khan 7 Makara, Phnom Penh, Cambodia.

Fax: +855 23 885003

E-mail: kong@mot.gov.kh

Web site: www.mot.gov.kh

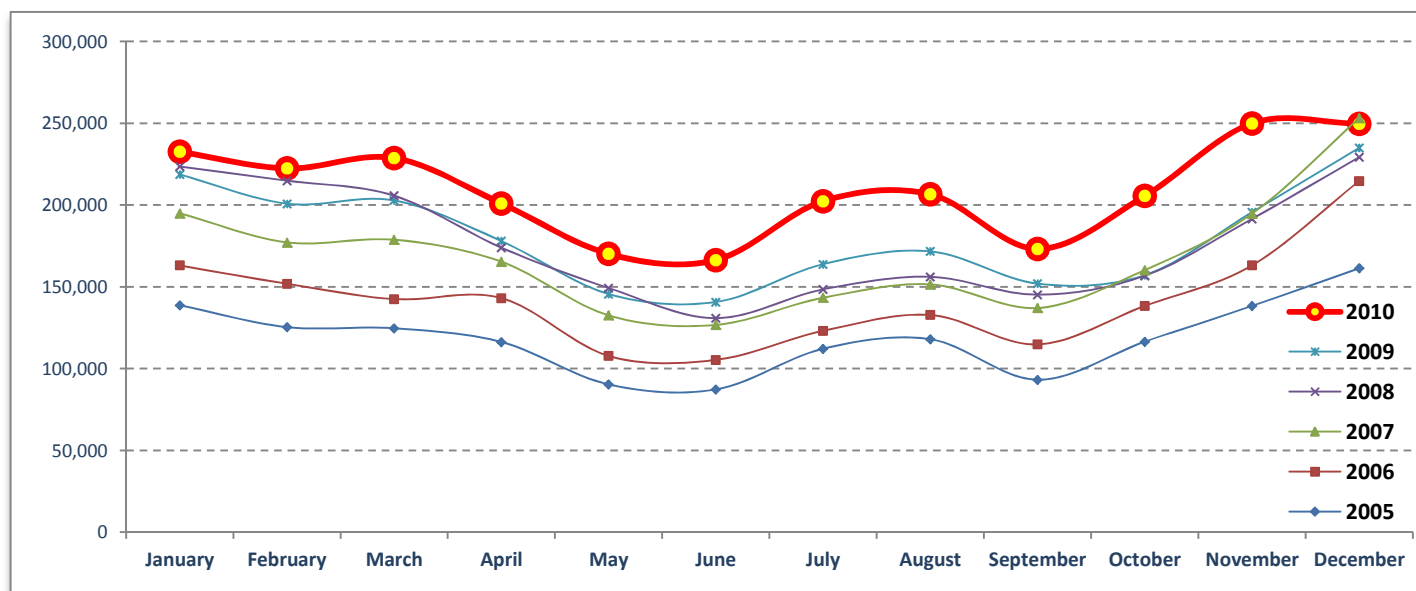
Tourism Highlights

Visitor Arrivals, Average Length of Stay, Hotels Occupancy and Tourism Receipts 1993 - 2010

Years	Visitor Arrivals		Average Length	Hotels Occupancy	Tourism Receipts
	number	change (%)	of Stay (days)	(%)	(million US\$)
1993	118,183	0.00	N/A	N/A	N/A
1994	176,617	49.44%	N/A	N/A	N/A
1995	219,680	24.38%	8.00	37.00	100
1996	260,489	18.58%	7.50	40.00	118
1997	218,843	-15.99%	6.40	30.00	103
1998	289,524	32.30%	5.20	40.00	166
1999	367,743	27.02%	5.50	44.00	190
2000	466,365	26.82%	5.50	45.00	228
2001	604,919	29.71%	5.50	48.00	304
2002	786,524	30.02%	5.80	50.00	379
2003	701,014	-10.87%	5.50	50.00	347
2004	1,055,202	50.53%	6.30	52.00	578
2005	1,421,615	34.72%	6.30	52.00	832
2006	1,700,041	19.59%	6.50	54.79	1,049
2007	2,015,128	18.53%	6.50	54.79	1,400
2008	2,125,465	5.48%	6.65	62.68	1,595
2009	2,161,577	1.70%	6.45	63.57	1,561
2010	2,508,289	16.04%	6.45	65.74	1,786

International visitor arrivals to Cambodia

Destination	Months	2005	2006	2007	2008	2009	2010	change(%) 2010*/09
Cambodia	Q1	388,670	457,305	550,813	644,205	622,288	683,692	9.87%
<i>International visitor arrivals</i>	January	138,718	163,047	194,932	223,581	218,691	232,590	6.36%
<i>by all means of transportation,</i>	February	125,326	151,821	177,130	214,902	200,789	222,354	10.74%
<i>include same-day visitors</i>	March	124,626	142,437	178,751	205,722	202,808	228,748	12.79%
	Q2	293,761	356,087	424,536	454,031	464,230	537,464	15.78%
	April	116,219	143,069	165,347	173,903	177,955	200,965	12.93%
	May	90,314	107,720	132,512	149,275	145,564	170,164	16.90%
	June	87,228	105,298	126,677	130,853	140,711	166,335	18.21%
	Q3	323,217	370,620	431,815	449,693	487,422	582,024	19.41%
	July	112,116	123,047	143,310	148,449	163,817	202,349	23.52%
	August	117,943	132,792	151,478	156,098	171,668	206,563	20.33%
	September	93,158	114,781	137,027	145,146	151,937	173,112	13.94%
	Q4	415,967	516,029	607,964	577,536	587,637	705,109	19.99%
	October	116,382	138,296	160,235	156,718	157,105	205,515	30.81%
	November	138,293	163,068	194,646	191,549	195,570	249,892	27.78%
	December	161,292	214,665	253,083	229,269	234,962	249,702	6.27%
	Total	1,421,615	1,700,041	2,015,128	2,125,465	2,161,577	2,508,289	16.04%



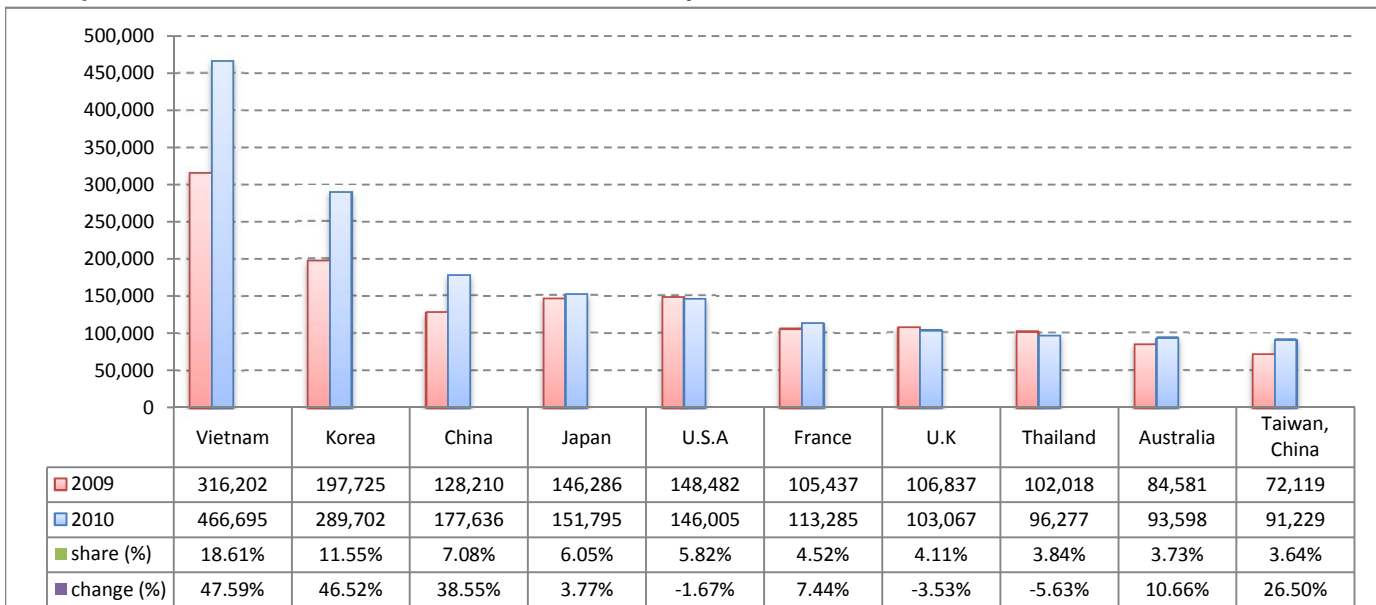
Executive Summary Report in 2010

I. Visitor arrivals to Cambodia from January - December was: **2,508,289**

II. Mode of arrivals

	visitors	share (%)
- Air	1,304,300	52.00
Phnom Penh Int'l Airport	591,628	23.59
Siem Reap Int'l Airport	712,672	28.41
- Land and Water ways	1,094,599	43.64
Land	1,016,584	40.53
Boat	78,015	3.11
- Same-day visitors	109,390	4.36
Total	2,508,289	100.00

III. Top ten markets arrivals to Cambodia from January - December in 2010



IV. Visitor arrivals to Cambodia from January - December in 2010

Visitor arrivals			share (%)		change (%)
	2009	2010	2009	2010	2010*/09
Air	1,111,729	1,304,300	51.43	52.00	17.32
Phnom Penh Int'l Airport	527,745	591,628	24.41	23.59	12.10
Siem Reap Int'l Airport	583,984	712,672	27.02	28.41	22.04
Land and Water ways	934,006	1,094,599	43.21	43.64	17.19
Land	855,697	1,016,584	39.59	40.53	18.80
Boat	78,309	78,015	3.62	3.11	-0.38
Sub-Total	2,045,735	2,398,899	94.64	95.64	17.26
Same-day visitors	115,842	109,390	5.36	4.36	-5.57
Total	2,161,577	2,508,289	100.00	100.00	16.04

V. Remark: Percentage share of visitor arrivals at destinations from January - December in 2010

Visitor arrivals			share (%)		change (%)
	2009	2010	2009	2010	2010*/09
Phnom Penh & Other Destinations	1,163,493	1,203,033	53.83%	47.96%	3.40%
Siem Reap Province	998,084	1,305,256	46.17%	52.04%	30.78%
Total	2,161,577	2,508,289	100.00%	100.00%	16.04%

VI. Outbound tourist departures from January - December in 2010

Outbound tourists	2009	2010	change (%)
Cambodian outbound tourist departure	339,698	504,990	48.66%
International outbound tourists departure	1,951,827	2,354,422	20.63%

Visitor Arrivals to Cambodia by Country of Residence from January - December in 2010

(by all means of transportation)

Regions Country of Residence	2009	2010			Total	Females	share	change
		Purpose of Visit					(%)	(%)
		Tourists	Business	Others			2010*	2010*/09
GRAND TOTAL	2,161,577	2,330,578	140,947	36,764	2,508,289	1,096,320	100.00%	16.04%
Asia and the Pacific	1,367,539	1,563,823	114,024	20,161	1,698,008	751,910	67.70%	24.17%
ASEAN	692,819	803,820	39,525	9,835	853,180	372,623	34.01%	23.15%
Brunei Darussalam	406	241	7	212	460	167	0.02%	13.30%
Indonesia	9,585	8,834	3,199	603	12,636	4,923	0.50%	31.83%
Lao PDR	94,181	82,517	192	602	83,311	58,289	3.32%	-11.54%
Malaysia	77,759	83,914	5,700	338	89,952	30,959	3.59%	15.68%
Myanmar	2,316	1,937	512	165	2,614	1,020	0.10%	12.87%
Philippines	49,079	49,927	4,994	1,235	56,156	33,905	2.24%	14.42%
Singapore	41,273	43,211	1,673	195	45,079	16,808	1.80%	9.22%
Thailand	102,018	79,148	14,325	2,804	96,277	32,932	3.84%	-5.63%
Vietnam	316,202	454,091	8,923	3,681	466,695	193,620	18.61%	47.59%
Eastern Asia	548,422	643,754	65,065	6,226	715,045	325,587	28.51%	30.38%
China	128,210	138,012	37,783	1,841	177,636	76,067	7.08%	38.55%
Hong Kong, China	3,888	4,023	343	12	4,378	1,924	0.17%	12.60%
Japan	146,286	143,820	5,537	2,438	151,795	72,097	6.05%	3.77%
Mongolia	194	234	19	52	305	138	0.01%	57.22%
South Korea	197,725	274,817	13,052	1,833	289,702	134,433	11.55%	46.52%
Taiwan, China	72,119	82,848	8,331	50	91,229	40,928	3.64%	26.50%
Southern Asia	15,975	14,047	3,249	1,288	18,584	4,642	0.74%	16.33%
Afghanistan	126	143	8	29	180	44	0.01%	42.86%
Bangladesh	925	1,267	223	168	1,658	169	0.07%	79.24%
India	12,461	10,631	2,248	663	13,542	3,721	0.54%	8.68%
Nepal	908	736	227	118	1,081	272	0.04%	19.05%
Pakistan	798	646	280	166	1,092	189	0.04%	36.84%
Srilanka	757	624	263	144	1,031	247	0.04%	36.20%
Oceania	98,678	98,966	5,867	2,473	107,306	46,973	4.28%	8.74%
Australia	84,581	86,427	5,044	2,127	93,598	41,417	3.73%	10.66%
New Zealand	14,097	12,539	823	346	13,708	5,556	0.55%	-2.76%
Others Asia & the Pacific	11,645	3,236	318	339	3,893	2,085	0.16%	-66.57%
Europe	464,742	463,096	16,816	9,488	489,400	202,836	19.51%	5.31%
Northern Europe	153,311	137,716	5,530	2,521	145,767	54,705	5.81%	-4.92%
Denmark	8,937	7,407	230	173	7,810	3,075	0.31%	-12.61%
Finland	6,559	4,898	152	194	5,244	1,838	0.21%	-20.05%
Iceland	183	215	11	3	229	67	0.01%	25.14%
Ireland	9,037	8,139	252	176	8,567	3,450	0.34%	-5.20%
Norway	7,017	7,374	259	141	7,774	3,017	0.31%	10.79%
Sweden	14,741	12,385	425	266	13,076	5,024	0.52%	-11.30%
United Kingdom	106,837	97,298	4,201	1,568	103,067	38,234	4.11%	-3.53%
Western Europe	226,057	224,096	9,202	5,514	238,812	98,777	9.52%	5.64%
Austria	8,681	8,290	177	80	8,547	3,493	0.34%	-1.54%
Belgium	12,980	13,328	564	403	14,295	5,678	0.57%	10.13%
France	105,437	104,270	5,859	3,156	113,285	47,733	4.52%	7.44%
Germany	59,916	60,303	1,349	1,212	62,864	25,598	2.51%	4.92%
Luxembourg	472	602	11	26	639	253	0.03%	35.38%
Netherlands	22,058	22,415	715	407	23,537	9,697	0.94%	6.71%
Switzerland	16,513	14,888	527	230	15,645	6,325	0.62%	-5.26%
Eastern Europe	34,457	53,147	858	396	54,401	27,315	2.17%	57.88%
Bulgaria	384	425	13	7	445	222	0.02%	15.89%
Czech	2,649	3,067	11	35	3,113	1,264	0.12%	17.52%
Hungary	2,184	2,674	42	24	2,740	1,285	0.11%	25.46%
Poland	6,319	8,635	42	35	8,712	4,383	0.35%	37.87%
Romania	774	1,145	14	12	1,171	628	0.05%	51.29%
Russia	19,395	33,306	637	227	34,170	17,558	1.36%	76.18%
Slovakia	895	1,226	20	40	1,286	575	0.05%	43.69%
Ukraine	1,857	2,669	79	16	2,764	1,400	0.11%	48.84%
Southern Europe	40,145	45,327	985	822	47,134	20,151	1.88%	17.41%
Croatia	313	419	23	28	470	211	0.02%	50.16%
Greece	1,406	1,335	39	21	1,395	548	0.06%	-0.78%
Italy	17,154	19,043	434	331	19,808	7,717	0.79%	15.47%
Portugal	2,481	2,485	30	39	2,554	1,181	0.10%	2.94%
Slovenia	740	670	12	10	692	302	0.03%	-6.49%
Spain	16,311	18,617	270	276	19,163	9,088	0.76%	17.49%
Turkey	1,740	2,758	177	117	3,052	1,104	0.12%	75.40%
Others Europe	10,772	2,810	241	235	3,286	1,888	0.13%	-69.49%

Source: Statistics and Tourism Information Department, MOT

Visitor Arrivals to Cambodia by Country of Residence from January - December in 2010

(by all means of transportation)

Regions Country of Residence	2009	2010			Total	Females	share	change
		Purpose of Visit					2010*	2010*/09
		Tourists	Business	Others				
GRAND TOTAL	2,161,577	2,330,578	140,947	36,764	2,508,289	1,096,320	100.00%	16.04%
Americas	201,130	182,850	9,441	6,798	199,089	83,929	7.94%	-1.01%
Argentina	1,717	2,154	21	37	2,212	1,138	0.09%	28.83%
Brazil	2,204	2,412	29	49	2,490	1,211	0.10%	12.98%
Canada	36,340	36,251	1,789	678	38,718	16,926	1.54%	6.54%
Chile	1,943	2,197	30	13	2,240	1,054	0.09%	15.29%
Colombia	942	990	23	47	1,060	509	0.04%	12.53%
Mexico	2,722	3,100	37	20	3,157	1,536	0.13%	15.98%
Peru	422	431	15	22	468	205	0.02%	10.90%
United States	148,482	132,959	7,331	5,715	146,005	59,908	5.82%	-1.67%
Uruguay	313	333	0	0	333	179	0.01%	6.39%
Others Americas	6,045	2,023	166	217	2,406	1,263	0.10%	-60.20%
Africa	5,403	3,955	471	201	4,627	1,514	0.18%	-14.36%
Cameroon	1,051	460	19	14	493	125	0.02%	-53.09%
Ghana	624	465	11	27	503	59	0.02%	-19.39%
Nigeria	1,100	518	227	24	769	48	0.03%	-30.09%
Sudan	32	28	2	7	37	3	0.00%	15.63%
South Africa	2,104	2,229	183	47	2,459	1,104	0.10%	16.87%
Others Africa	492	255	29	82	366	175	0.01%	-25.61%
Middle East	6,921	7,464	195	116	7,775	2,666	0.31%	12.34%
Egypt	173	194	13	13	220	37	0.01%	27.17%
Iran	338	495	4	19	518	99	0.02%	53.25%
Israel	5,439	5,995	163	28	6,186	2,383	0.25%	13.73%
Kuwait	633	535	1	7	543	33	0.02%	-14.22%
Palestine						0		
Saudi Arabia	48	60	2	2	64	7	0.00%	33.33%
United Arab Emirates						0		
Others Middle East	290	185	12	47	244	107	0.01%	-15.86%
Same-day visitors	115,842	109,390	0	0	109,390	53,465	4.36%	-5.57%

Remark:

- Cambodian Overseas:	85,957
- Cambodian Residence:	422,611
- Cambodian outbound tourist departures:	504,990
- International outbound tourist departures:	2,354,832

COMPILED BY:

1. Mr. Kong Sopheareak

Director
Statistics & Tourism Information Department
Fax: +855 23 885003
E-mail: kong@mot.gov.kh

2. Mr. Horth Vanny

Chief of Tourism Statistics Office
Compile and data analysis
Tel.: +855 12 827664